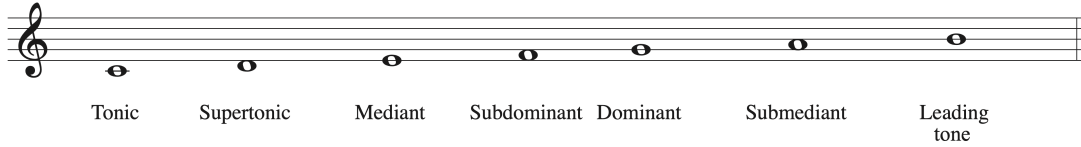
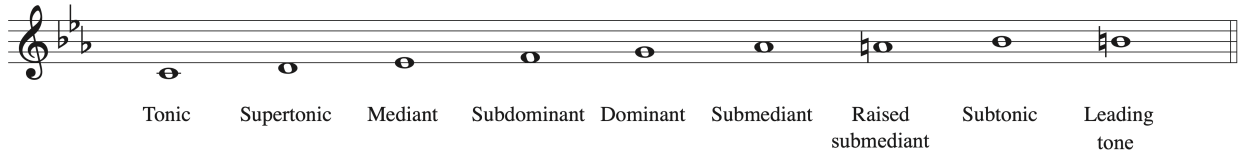


## Scale Degree Names

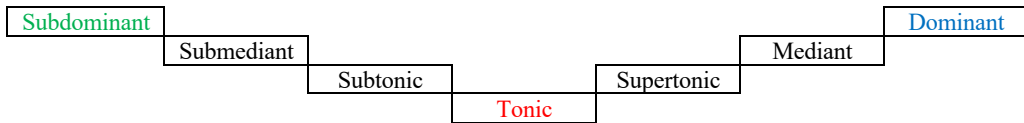
### MAJOR MODE



### MINOR MODE



### SYMMETRICAL ARRANGMENT AROUND TONIC



### ARABIC NUMBERS

#### Referential Major Scale

<i>do</i>		<i>re</i>		<i>mi</i>	<i>fa</i>		<i>sol</i>		<i>la</i>		<i>ti</i>	<i>do</i>
1̂		2̂		3̂	4̂		5̂		6̂		7̂	1̂

#### 1. Natural minor scale

<i>do</i>		<i>re</i>	<i>me</i>		<i>fa</i>		<i>sol</i>	<i>le</i>		<i>te</i>		<i>do</i>
1̂		2̂	b3̂		4̂		5̂	b6̂		b7̂		1̂

#### 2. Harmonic minor scale

<i>do</i>		<i>re</i>	<i>me</i>		<i>fa</i>		<i>sol</i>	<i>le</i>			<i>ti</i>	<i>do</i>
1̂		2̂	b3̂		4̂		5̂	b6̂			7̂	1̂

#### 3. Melodic minor (ascending) scale

<i>do</i>		<i>re</i>	<i>me</i>		<i>fa</i>		<i>sol</i>		<i>la</i>		<i>ti</i>	<i>do</i>
1̂		2̂	b3̂		4̂		5̂		6̂		7̂	1̂